

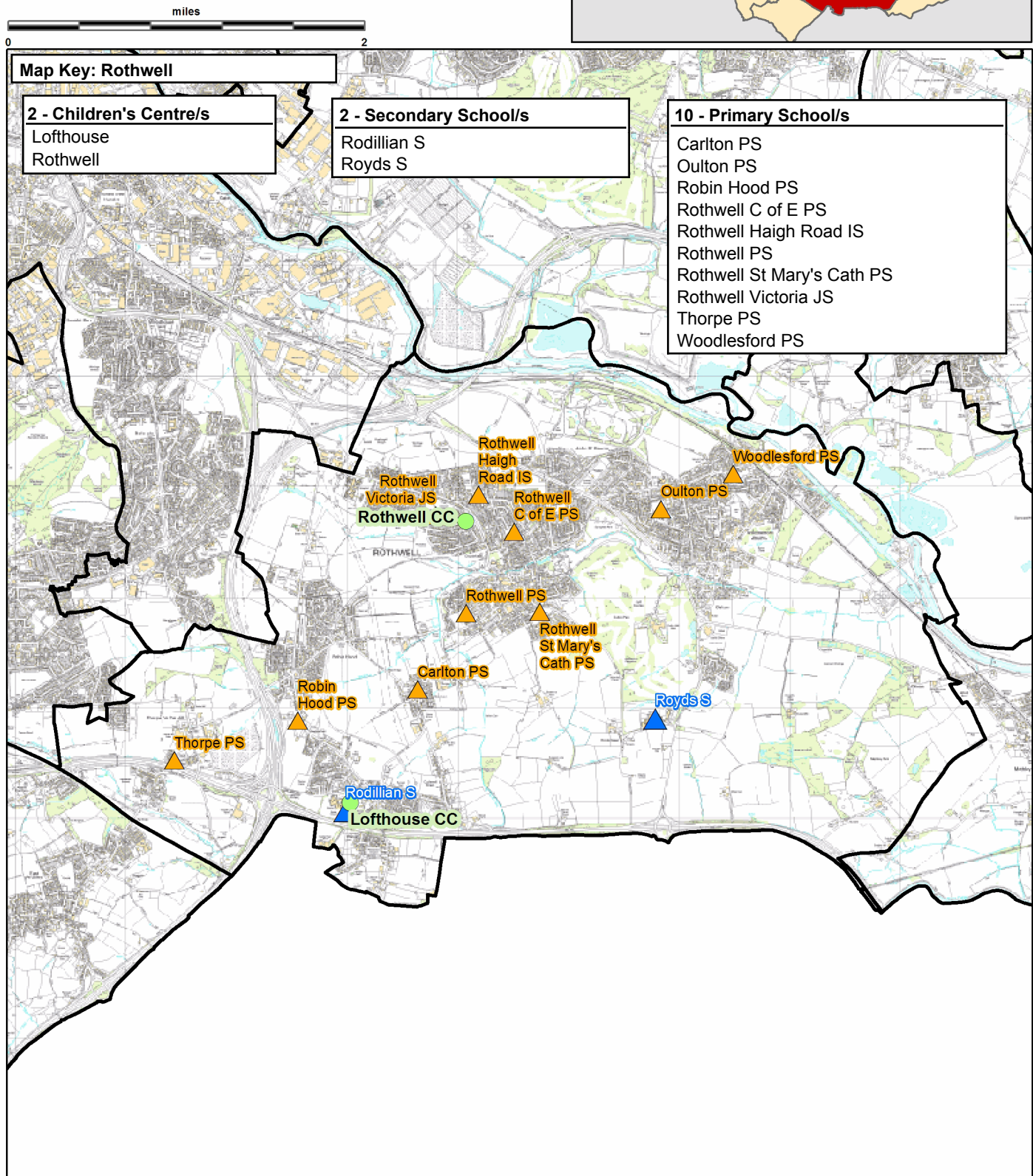
# Rothwell

This report was produced by the Children's Performance Service on 01/06/2012. The information in these overviews are based on the cluster data profile version 5.12.

For more information telephone 0113 39 50701 or email [educ.pmi@leeds.gov.uk](mailto:educ.pmi@leeds.gov.uk) or visit:

[www.leedsinitiative.org/ClusterDataProfile.aspx](http://www.leedsinitiative.org/ClusterDataProfile.aspx)

The map to the right gives the position of the cluster in Leeds. The map below shows the location of the Children's Centres, Primary and Secondary Schools in the cluster.



**Cluster Overviews key****Data Period:**

The codes in the key to the right are for the time periods that the data in these reports cover. They will appear next to all data sets.

Academic Year  
Calendar Year  
Financial Year  
Snapshot  
Other

DP:A  
DP:C  
DP:F  
DP:S  
DP:O

**Cluster Overview**

Data Source: January School Census					DP: S	Data Source: January School Census					DP: S
Primary Schools		DFE	Total Number on roll			Secondary Schools		DFE	Total Number on roll		
			2010	2011	2012				2010	2011	2012
Carlton Primary School		2308	288	312	318	Rodillian School		4103	1213	1183	1212
Oulton Primary School		2327	314	312	317	Royds School		4104	1242	1225	1205
Robin Hood Primary School		2309	361	363	363	* = closed school		<b>Total</b>	<b>2455</b>	<b>2408</b>	<b>2417</b>
Rothwell C of E Primary School		3043	198	187	183						
Rothwell Haigh Road Infant School		2313	180	169	171						
Rothwell Primary School		2506	313	315	335						
Rothwell Victoria Junior School		2342	143	141	138						
St Mary's Catholic PS Rothwell		3364	204	207	206						
Thorpe Primary School		2312	169	180	185						
Woodlesford Primary School		2314	474	472	473						
<b>0 Total</b>			<b>2644</b>	<b>2658</b>	<b>2689</b>						

Data Source: Children's Services - Feb 2012		DP: S
Children's Centre reach area registration for families of children aged 0-5		% Registered
Cluster		54.59
Wedge		61.66
Leeds all		60.23

Data Source: Children's Services	
Children's Centre	Ofsted ID
Lofthouse	
Rothwell	512423

Data Source: The office of National Statistics population mid-year estimates										DP: S
Population Estimates	0-15			Working Age			60/65+			
Number of people by age group/year	2008	2009	2010	2008	2009	2010	2008	2009	2010	
Cluster	5355	5355	5416	18396	18687	18942	5581	5787	5957	
Wedge	47897	48099	48486	176361	180282	184227	45628	46348	47187	
Leeds all	132741	133396	134493	516578	522769	531036	129937	131536	133240	

Data Source: NHS Leeds											DP: S	
Under Fives	September 2010						September 2011					
	Number of infants by age group:						Number of infants by age group:					
	0-1	1-2	2-3	3-4	4-5	Total	0-1	1-2	2-3	3-4	4-5	Total
Cluster	391	348	349	384	368	1840	355	392	360	346	399	1852
Wedge	3707	3509	3422	3243	3351	17232	3579	3695	3530	3416	3275	17495
Leeds all	10202	9848	9478	9195	9113	47836	9996	10173	9787	9438	9319	48713

Data Source: January School Census													DP: S
Percentage of pupils who are:	Black and Minority Ethnic			English as an Additional Language			Free School Meal Eligible			Special Education Needs			
	2010	2011	2012	2010	2011	2012	2010	2011	2012	2010	2011	2012	
<b>Primary</b>													
Cluster school	5.9	6.1	8.2	2.2	2.0	2.1	14.0	14.9	14.1	16.1	15.1	14.1	
Cluster residence	6.0	6.3	7.9	2.4	2.0	1.9	14.3	15.5	15.2	16.1	15.0	14.2	
Wedge school	13.1	14.1	16.1	8.8	9.5	10.2	21.4	22.2	22.2	19.0	18.6	18.2	
Total primary	23.6	24.8	26.4	15.8	16.5	17.1	21.5	22.2	22.0	17.8	17.8	17.4	
<b>Secondary</b>													
Cluster school	3.6	4.4	5.3	1.1	1.4	1.8	20.1	20.1	20.3	18.5	17.2	18.3	
Cluster residence	3.7	4.4	5.4	0.9	1.0	1.5	16.3	16.5	16.9	18.9	17.6	18.1	
Wedge school	7.5	8.1	9.0	4.3	4.8	5.5	19.1	19.2	19.1	22.0	19.3	21.4	
Total secondary	18.6	19.4	20.4	10.4	10.0	11.1	19.0	19.4	19.5	21.4	20.4	19.0	
<b>Leeds all</b>	<b>21.4</b>	<b>22.5</b>	<b>23.9</b>	<b>13.4</b>	<b>13.7</b>	<b>14.6</b>	<b>20.6</b>	<b>21.1</b>	<b>21.1</b>	<b>20.0</b>	<b>19.6</b>	<b>18.7</b>	

Data Source: HM Revenue and Customs - taken on 31st August 2007-2009										DP: S
Child Poverty	Number of children (under 16) in families in receipt of CTC or IS/JSA			Number of children (all ages) in families in receipt of CTC or IS/JSA			Number of children in poverty, by age of youngest child, 2009			
	2007	2008	2009	2007	2008	2009	0-4	5-10	11-15	16-19
Cluster	775	785	855	850	885	960	475	280	155	50
Wedge	10885	10860	11645	12055	12130	13000	7265	3380	1805	550
Leeds all	30235	29700	31030	33690	33300	34965	18720	9640	5115	1490

Data Source: Children's Services - Summer Term 2011					DP: S
Nursery Education Grant Claims	Number of eligible children	Number of: Claims by childcare setting		Resident Claims	Non Resident Claims
Cluster	573	506		438	69
Leeds all	14500	13851		9704	4148

Data Source: January School Census and 2010 Index of Multiple Deprivation										DP: S
IMD % of pupils resident in most deprived areas	3% most deprived			10% most deprived			20% most deprived			
	10	11	12	10	11	12	10	11	12	
<b>Primary</b>										
Cluster school	0.1	0.1	0.0	0.8	0.8	1.0	6.1	6.3	6.1	
Cluster residence	0.0	0.0	0.0	0.0	0.0	0.0	5.2	5.2	5.1	
Wedge school	7.7	8.1	7.9	26.4	25.6	26.0	32.3	34.4	34.8	
Total primary	8.2	8.4	8.3	28.1	27.1	27.3	36.6	37.6	38.0	
<b>Secondary</b>										
Cluster school	0.6	4.1	4.3	15.3	18.2	19.3	22.3	24.0	25.6	
Cluster residence	0.0	0.0	0.0	0.0	0.0	0.0	5.1	5.3	5.9	
Wedge school	6.5	7.7	7.8	22.6	22.4	22.8	27.9	30.4	30.7	
Total secondary	7.0	7.5	7.6	24.0	23.5	23.8	32.3	33.5	33.6	
<b>Leeds all</b>	<b>7.7</b>	<b>8.0</b>	<b>8.0</b>	<b>26.4</b>	<b>25.7</b>	<b>25.9</b>	<b>34.8</b>	<b>35.9</b>	<b>36.2</b>	

Data Source: January School Census and CACI ACORN											DP: S
KEY: Wealthier Achievers(WA), Urban Prosperity (UP), Comfortably Off (CO), Moderate Means (MM), Hard Pressed (HP)											
Percentage of pupils in each ACORN category	2011					2012					
	WA	UP	CO	MM	HP	WA	UP	CO	MM	HP	
<b>Primary</b>											
Cluster school	24.2	0.7	38.3	11.6	24.6	24.0	0.9	38.3	11.3	24.9	
Cluster residence	24.2	0.8	38.0	11.8	25.1	23.5	0.9	38.6	11.3	25.5	
Wedge school	12.5	1.1	31.1	17.7	36.9	12.2	1.3	30.7	17.9	37.3	
Total primary	15.4	5.9	27.8	15.8	34.3	15.0	6.0	27.7	15.9	34.6	
<b>Secondary</b>											
Cluster school	16.2	0.4	31.0	11.5	40.2	15.4	0.8	30.3	10.8	42.0	
Cluster residence	21.0	0.4	36.7	13.7	28.2	21.0	0.7	35.9	12.7	29.7	
Wedge school	14.4	0.8	32.9	16.0	35.3	13.9	0.8	32.9	16.0	35.6	
Total secondary	17.1	5.2	29.7	14.7	32.5	16.9	5.3	29.8	14.7	32.6	
<b>Leeds all</b>	<b>16.1</b>	<b>5.6</b>	<b>28.5</b>	<b>15.4</b>	<b>33.6</b>	<b>15.8</b>	<b>5.7</b>	<b>28.5</b>	<b>15.4</b>	<b>33.8</b>	

Data Source: DWP information Directorate												DP: F
KEY: Job Seekers Allowance (JSA), Incapacity Benefit (IB), Lone Parent Benefit (LPB), Total Out of Work (TOW)												
Unemployment Percentage of working age people in receipt of:	2009				2010				2011			
	JSA	IB	LPB	TOW	JSA	IB	LPB	TOW	JSA	IB	LPB	TOW
Cluster	3.0	5.6	1.3	10.2	2.7	5.4	1.2	9.6	2.6	5.3	1.1	9.4
Wedge	4.8	6.6	2.0	13.9	4.5	6.4	1.9	13.4	4.5	6.4	1.7	13.2
Leeds all	4.4	5.9	1.8	12.6	4.3	5.8	1.7	12.3	4.2	5.8	1.5	12.1

Data Source: AXCIOM Lifestyle Survey 2009-2011											DP: S								
Property type by %										Length of residence by %									
Owned			Rented - Council			Rented - Private			Less than 1 year			2-5 years			More than 5 years				
09	10	11	09	10	11	09	10	11	09	10	11	09	10	11	09	10	11		
Cluster	72.1	72.2	26.0	19.6	19.4	45.5	8.2	8.4	0.1	6.0	3.4	3.5	22.7	22.2	18.6	71.2	74.4	77.8	
Wedge	62.1	62.3	39.5	25.0	24.7	53.4	12.9	13.0	0.0	8.0	6.3	4.7	20.9	20.9	19.4	71.1	72.8	75.9	
Leeds all	61.5	61.6	39.0	24.0	23.9	61.2	14.5	14.6	0.0	7.9	8.1	5.1	20.3	20.0	18.5	71.9	71.9	76.4	

Income by %	<10k			10-20k			20-30k			30-40k			40-50k			50k+		
	09	10	11	09	10	11	09	10	11	09	10	11	09	10	11	09	10	11
Cluster	14	12	12	19	16	22	19	14	17	16	20	15	18	17	14	15	21	20
Wedge	20	19	17	21	20	23	17	15	17	16	19	16	13	14	13	13	14	13
Leeds all	20	18	18	21	20	23	16	15	16	15	18	17	14	13	13	14	16	14

Struggling with payments by %										Food			Bills			Mortgage		
										09	10	11	09	10	11	09	10	11
Cluster										15.5	9.7	6.2	16.5	11.1	7.1	3.4	2.9	0.7
Wedge										17.1	9.9	6.4	16.3	11.8	8.4	2.5	2.5	1.8
Leeds all										15.9	10.8	6.4	16.3	13.0	8.3	2.2	2.2	1.7

## Being Healthy

Data Source: NHS Leeds						DP: Various - Listed with each report									
Birth Data			3 year rolling average of births below 2.5kg			Number and rate of conceptions per 1000 15-17 year olds									
DP: C			% low birth weight babies			DP: O			Number			Rate			
			2006-08	2007-09	2008-10	June to May	2008-09	2009-10	2008-09	2009-10				2008-09	2009-10
Cluster			7.2	7.1	5.6	Cluster	36	33	32	31					
Wedge			7.7	7.7	7.6	Wedge	472	459	48	48					
Leeds all			7.8	7.8	7.6	Leeds all	1220	1145	45	43					

DP: C				DP: F					
% of women receiving a health and social care needs assessment at 12 weeks as a percentage of live births in the same year				% Initiating breastfeeding April to March			% breastfeeding at 6 weeks April to March		
	2009	2010	2011	2009-10	2010-11	2009-10	2010-11	2009-10	2010-11
Cluster	90.1	89.7	90.8	61.0	70.5	35.4	37.8		
Wedge	82.4	82.7	84.9	62.1	59.8	34.9	34.7		
Leeds all	81.6	82.9	84.0	67.6	65.1	40.4	39.3		

DP: C				DP: F					
Number of emergency admissions by age group 2007-11				Number of emergency admissions to hospital for injury, poisoning and certain other consequences of external causes by age group					
	0-4	5-10	11-18	0-4	5-10	11-18	0-4	5-10	11-18
Cluster	1273	350	629	135	96	240			
Wedge	10977	3008	6552	1278	922	2455			
Leeds all	29793	8247	18194	3419	2522	6711			

Immunisation Data															
% of 2 year olds receiving vaccinations in quarter 3 for:							% of 5 year olds receiving vaccinations in quarter 3 for:								
DP: F			Diphtheria				MMR			Diphtheria			MMR		
	09-10	10-11	11-12	09-10	10-11	11-12	09-10	10-11	11-12	09-10	10-11	11-12			
Cluster	98	98	99	87	91	96	97	98	98	94	96	100			
Wedge	96	96	98	84	86	95	97	96	97	91	93	97			
Leeds all	96	96	97	86	88	94	95	94	96	91	91	95			

Data Source: National Child Measurement Programme												DP: A		
Obesity	Obesity in Reception						Obesity in Year 6							
	% Obese			% Obese or overweight			% Obese			% Obese or overweight				
	08-09	09-10	10-11	08-09	09-10	10-11	08-09	09-10	10-11	08-09	09-10	10-11		
Cluster	6.6	8.1	8.3	17.0	20.8	22.4	14.6	14.8	20.4	29.2	29.1	32.1		
Wedge	9.0	10.2	9.6	20.8	23.4	23.9	20.1	20.0	20.6	34.7	35.0	34.8		
Leeds all	9.4	10.2	9.7	21.7	23.7	23.4	20.3	20.7	20.0	34.3	35.1	34.3		

Obesity	Obesity in Reception			Obesity in Year 6		
	3 year average 2008-2011			3 year average 2008-2011		
	% Obese		% Obese or overweight	% Obese		% Obese or overweight
Cluster	7.66		20.14	16.47		30.09
Wedge	9.61		22.74	20.24		34.83
Leeds all	9.77		22.96	20.32		34.56



## Stay Safe

Data Source: Children's Services					DP: Various - Listed with each report						
Number of LAC and Child protection	The number of children and young people looked after by the Local Authority - March based on home address before coming into care				based on placement address				The number of children with child protection plans - March		
	DP: S		2011	2012	2012		2011	2012	DP: S		
			2011	2012	2012		2011	2012			
Cluster			27	23	70		41	34			
Wedge			0	505	442		0	367			
Leeds all			1439	1454	1454		947	1019			
Number of Common Assessments (CAFs)					Social Care			Social Care Referrals		Requests for Service	
DP: C					DP:A					DP:S	
					2009			2010		2011	
					2009			2010		2011	
Cluster	2008	2009	2010	2011	Cluster			443		435	
Wedge	128	234	410	313	Wedge			5505		5001	
Leeds all	457	849	1115	892	Leeds all			14248		13784	
					14000				30539		
Number of Child and Adolescent Mental Health Services referrals											
DP: S											
aged 11 and under											
aged 12-18											
total referrals											
September-October											
2009-10											
2010-11											
2009-10											
2010-11											
2009-10											
2010-11											
Cluster			71	54	97		65		168		119
Wedge			649	421	973		555		1622		976
Leeds all			1767	1124	2976		1730		4743		2854

## Make a positive Contribution

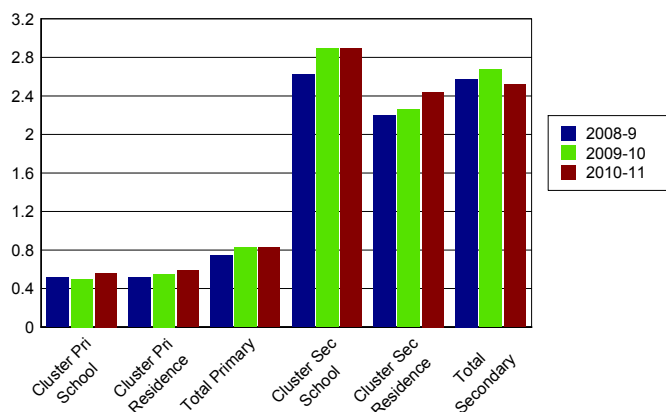
Data Source: West Yorkshire Police										DP: C	
Property Crime		Burglary dwelling		Burglary elsewhere		Criminal damage		Robbery		Vehicle crime	
Number of recorded crimes for:		10	11	10	11	10	11	10	11	10	
		10	11	10	11	10	11	10	11	10	
Cluster	198		122		172		127		273		247
Wedge	2555		1992		2378		2038		5038		3731
Leeds all	9508		8487		5681		5408		13599		10426
Personal Crime						Drug Offences		Theft from person		Violent crime	
Number of recorded crimes for:						10		11		10	
						10		11		10	
Cluster					7		39		16		12
Wedge					563		1049		1382		2023
Leeds all					1248		3192		2235		3034
Domestic Violence Incidents		Number of incidents recorded with a domestic qualifier or disposition code on the Storm WYP incident recording system - 2011									
Cluster	356										
Wedge	5227										
Leeds all	14525										

Data Source: Youth Offending Service										DP: A	
Youth Offending		Number of Offenders				Number of Offences					
		07-08	08-09	09-10	10-11	07-08	08-09	09-10	10-11		
Cluster	84		59		51		53		179		107
Wedge	818		610		484		500		1943		1418
Leeds all	2741		2166		1522		1511		6331		4883
April 2010 - March 2011 Number of offences by young offenders											
		Burglary	Breaches	Criminal Damage	Drugs Offences	Motoring and Vehicle	Other	Public Order	Theft and handling	Violence against the person	
Cluster	6		SUPP		12		SUPP		SUPP		SUPP
Wedge	81		80		91		59		53		104
Leeds all	291		270		328		204		218		358
		282		612		587					

Data Source: School Census													DP: A
Attendance and persistent absence by percentage	Attendance			Authorised Absence			Unauthorised Absence			Persistent Absence 15%			
	08-09	09-10	10-11	08-09	09-10	10-11	08-09	09-10	10-11	08-09	09-10	10-11	
<b>Primary</b>													
Cluster school	95	95	95	4	5	4	0.5	0.5	0.6	3.9	4.4	3.9	
Cluster residence	95	95	95	4	5	4	0.5	0.6	0.6	3.8	4.6	3.9	
Total primary	94	94	95	5	5	4	0.7	0.8	0.8	5.9	5.5	4.3	
<b>Secondary</b>													
Cluster school	92	91	92	6	6	5	2.6	2.9	2.9	13.9	14.4	13.6	
Cluster residence	92	92	93	6	6	5	2.2	2.3	2.4	11.1	12.1	11.3	
Total secondary	92	92	92	6	6	5	2.6	2.7	2.5	13.0	13.1	11.2	

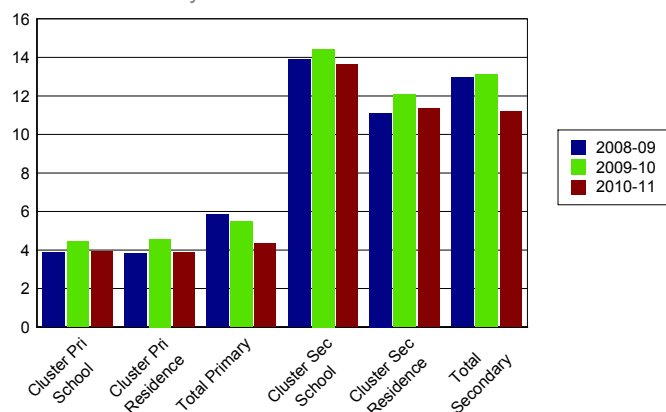
**% Unauthorised Absence**

2008-2011



**% Persistent Absence**

by 15% measure 2008-2011



Data Source: Children's Services													DP: A
Exclusions	Fixed Term Exclusions						Permanent Exclusions						
	Number			Rate per thousand			Number			Rate per thousand			
Primary	08-09	09-10	10-11	08-09	09-10	10-11	08-09	09-10	10-11	08-09	09-10	10-11	
Cluster school	42	11	23	16.2	4.2	8.7	0	0	0	0.0	0.0	0.0	
Cluster residence	29	11	20	10.7	4.1	7.4	0	0	0	0.0	0.0	0.0	
Total primary	467	371	455	7.7	6.0	7.3	2	2	2	0.0	0.0	0.0	
<b>Secondary</b>													
Cluster school	650	605	564	265.6	246.4	234.2	0	2	0	0.0	0.8	0.0	
Cluster residence	313	363	325	215.1	231.4	213.0	0	1	0	0.0	0.6	0.0	
Total secondary	4350	4286	3806	93.6	93.1	83.2	52	57	44	1.1	1.2	1.0	

## Enjoy and Achieve

Data Source: Keyphas and DFE performance tables

DP: A

**Foundation Stage Profile Data** The percentage of pupils achieving a good level of development (78+ points overall and 6+ points in all PSE and CCL strands)

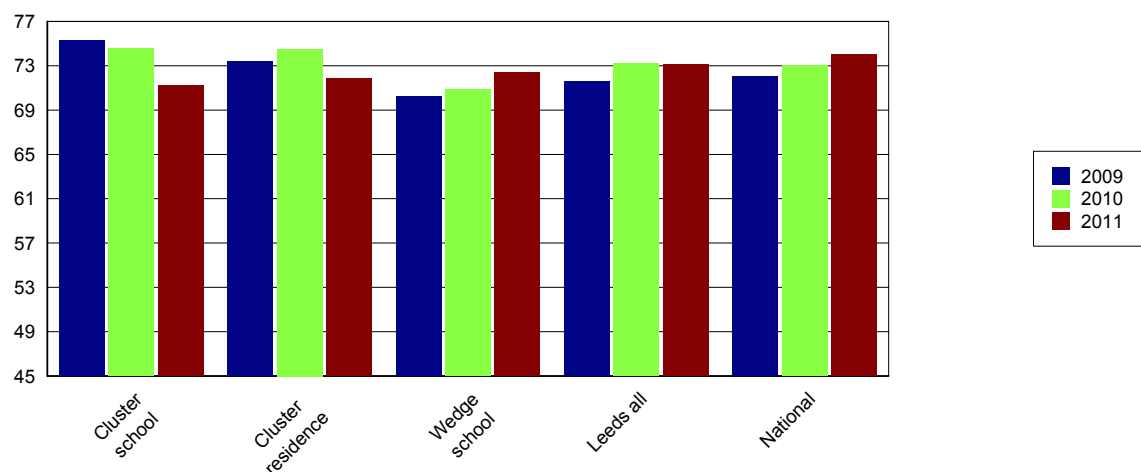
	2008	2009	2010	2011
Cluster school	66	56	60	66
Cluster residence	64	55	61	67
Leeds all	47	51	53	58

KS2 Data DP: A	English 4+			English 5+			Maths 4+			Maths 5+			English & Maths 4+		
	09	10	11	09	10	11	09	10	11	09	10	11	09	10	11
Cluster school	82	80	81	22	32	27	81	83	77	31	33	29	75	75	71
Cluster residence	81	81	82	22	32	27	79	82	77	31	33	28	73	75	72
Wedge school	78	78	81	23	27	27	76	77	78	30	29	28	70	71	72
Leeds all	79	79	81	28	31	32	77	79	78	33	31	32	72	73	73
National	80	80	82	29	33	29	79	79	80	35	34	35	72	73	74

KS2 Data - Expected progress	Made 2 levels of progress in English		Made 2 levels of progress in Maths	
	Number of pupils	Percentage	Number of pupils	Percentage
Cluster school	277	86.8	262	82.1
Wedge school	2294	88.4	2190	84.4
Leeds all	6334	88.6	6087	85.0
National		84.0		83.0

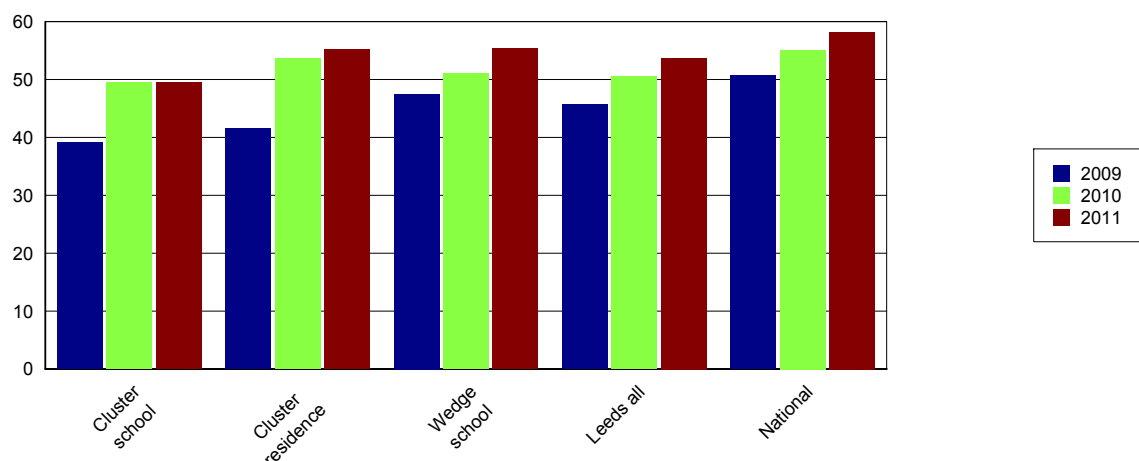
### Percentage of English and Maths

Level 4+



Data Source: EPAS and DFE performance tables											DP: A		
The results are for GCSE & equivalent qualifications. The calculation of achieving no qualifications includes all qualifications													
KS4 Data	% of 5+ A*-C			% of 5+ A*-C inc Eng & Maths			% English Baccalaureat	% of 5+ A*-G			% achieving no qualifications		
	09	10	11	09	10	11		11	09	10	11	09	10
Cluster school	54	76	85	39	49	50	5	91	95	95	1	2	1
Cluster residence	61	78	85	42	54	55	9	91	95	95	2	1	1
Wedge school	68	80	85	47	51	55	9	92	95	96	1	1	1
Leeds all	67	76	82	46	51	54	13	91	94	94	2	2	1
National	70	76	81	51	55	58	15	94	95	95		1	1

### Percentage 5 A\*-C Including English and Maths



## Achieve Economic Well Being

Key: Not in Employment, Education or Training (NEET), In Employment, Education or Training (EET), in Full time Education (FE)													
Data Source: November destination survey													DP: S
NEET/FE		Number of NEET			% NEET			Number of FE			% FE		
		2009	2010	2011	2009	2010	2011	2009	2010	2011	2009	2010	2011
Cluster school	Year 11	46	20	20	10	4	5	333	394	349	72	86	87
	Year 12	5	SUPP	SUPP	3	SUPP	SUPP	143	134	128	83	91	88
	Year 13	7	SUPP	SUPP	8	SUPP	SUPP	58	94	96	67	76	78
Cluster residence	Year 11	32	9	9	10	3	3	238	280	242	77	88	90
	Year 12	8	SUPP	SUPP	6	SUPP	SUPP	114	102	77	82	91	91
	Year 13	SUPP	SUPP	SUPP	SUPP	SUPP	SUPP	43	81	79	80	81	85
Leeds all	Year 11	646	393	357	8	5	5	6703	7194	6564	80	87	87
	Year 12	132	67	115	3	2	3	3436	3476	3550	90	93	93
	Year 13	121	135	120	5	4	4	2067	2350	2593	78	76	84

Data Source: Integrated Youth Support Service										DP: O
16-18 NEET and EET Nov 2011 to Jan 2012	NEET		EET		Not Known		Other Activity			
	Number	%	Number	%	Number	%	Number	%		
Cluster	53	5.9	829	93.4	SUPP	SUPP	SUPP	SUPP		
Wedge	589	7.3	7284	90.7	173	2.2	21	0.3		
Leeds all	1538	7.0	20170	91.7	343	1.6	58	0.3		

**Please Note:** Leeds totals for 16-18 NEET will not match publicised totals as published totals include a proportion of those whose status has expired